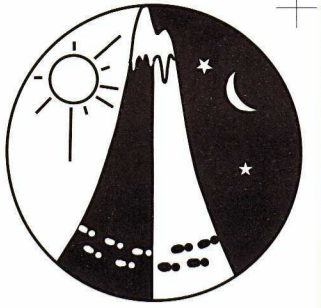


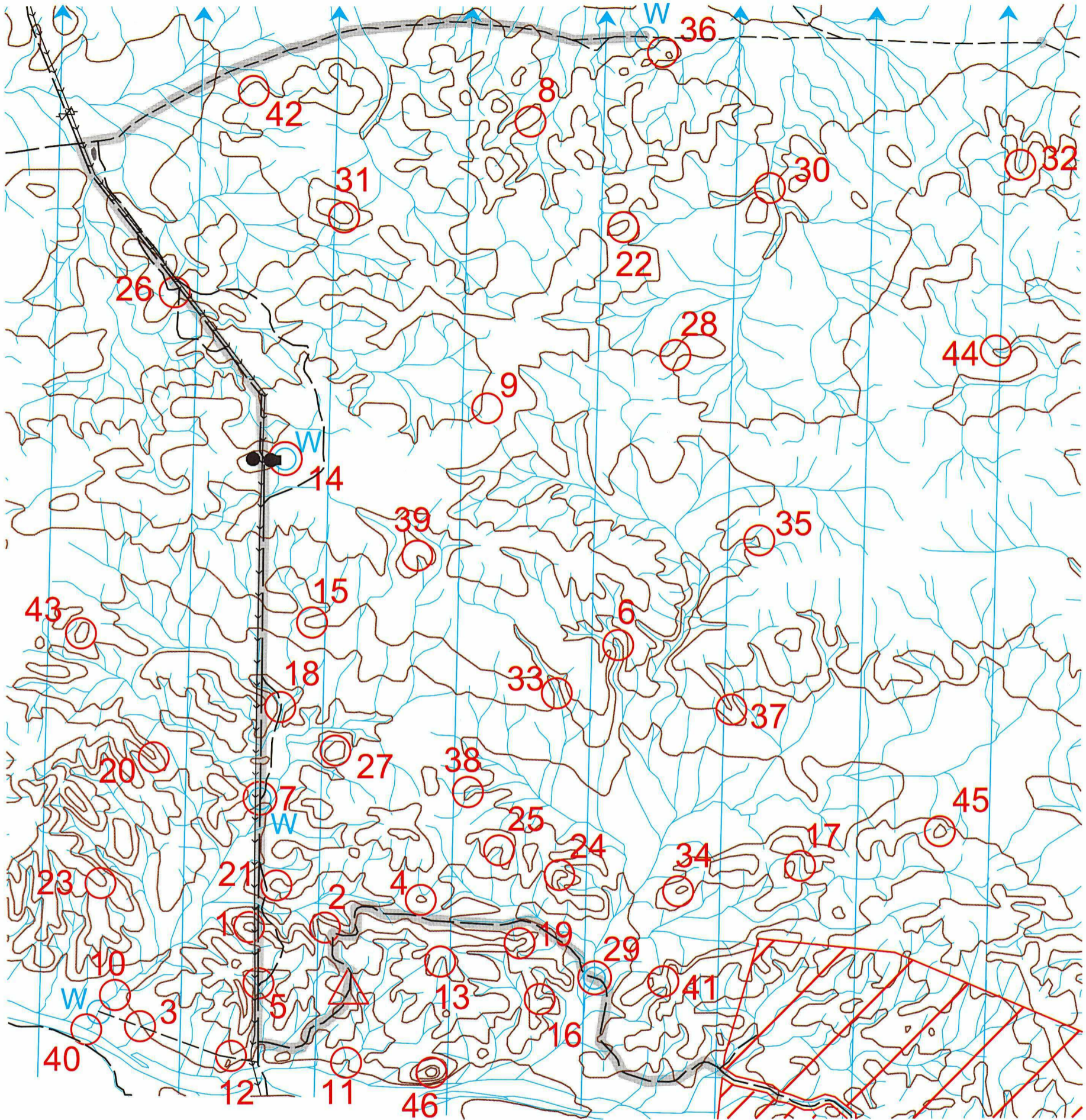
The Millstream Rogaine

Inaugural NW Rogaine - 6 August 2005



Setters and Vettors: David Westley, Ron Lockley, Vince Harding, Colette Sims, Warren Smith, Mal Dennett and Paul Williams (Wil).

Thanks to: CALM and CALM Rangers (Craig Faulkner, Ken and Kingsley), APEX (Jos van Helfteren), the Aboriginal elders, DSR Karratha (Rod Jones & Emma Brown), Water Corporation, Water Corporation Millstream (Howard and Marilyn King).



LEGEND

- Building
- Control 46
- Contours
- Hash House
- Magnetic North Line
- Out of Bounds
- Pipeline
- Road - Gravel
- Track - Minor
- Watercourse
- Water Drop W
- Patrolled Road

SCALE 1:25,000
10 metre contour interval
0 0.5km 1km

Supported by
Funding from:



This map was produced using OCAD 8 by the Western Australian Rogaining Association, wa.rogaine.asn.au. Data supplied by DOLA and used under copy licence 393/93. Possession of this map does not give right of entry to this area.

The Millstream Rogaine-Inaugural NW Rogaine-6th August 2005

Control Number	Control Description	Points	Control Number	Control Description	Points	Important Information
1	The knoll	20	24	The knoll, north side	60	<u>Water drops W</u> are located at controls: 7, 14, 29, and (W) are near 36 and between controls number 10 and 40 at the watercourse/track crossing.
2	A lookout	20	25	The gully, head of	60	
3	The watercourse/track crossing	30	26	The track, pipeline crossing	70	
4	The knoll	30	27	The knoll	70	<u>Patrolled tracks</u> are shown with grey shading on the map.
5	The track junction	30	28	The saddle	70	
6	The gully	30	29 W	The watercourse/track crossing	70	Injured persons please wait at a water drop or on a patrolled track to be picked up by a patrol vehicle.
7 W	The track junction	30	30	The watercourse junction	70	
8	A knoll	40	31	The knoll, east end	70	
9	The ridge	40	32	The gully	80	<u>Control Cards</u>
10 (W)	The watercourse junction	40	33	The gully	80	from 9.30am Saturday
11	The gully	40	34	The knoll	80	<u>Briefing</u>
12	The knoll	40	35	A knoll	80	9.50am Saturday
13	The gully, head of	40	36 (W)	The water course, head of	80	<u>Start</u>
14 W	The tanks, east side, east of shed	50	37	The spur	90	10.00am Saturday
15	The spur	50	38	The gully	90	<u>Finish</u>
16	The gully, head of	50	39	The gully	90	4.00pm Saturday
17	A gully	50	40 (W)	The watercourse junction	90	<u>Late penalty</u>
18	The watercourse/track crossing	50	41	The saddle	90	10 points per minute or part minute
19	The spur	50	42	A knoll	100	<u>Controls used</u>
20	The spur, west side	60	43	The knoll	100	46
21	A knoll	60	44	The watercourse bend	100	<u>Total points</u>
22	The knoll	60	45	The knoll	100	2860
23	The spur	60	46	The knoll	100	

Notes: **W** indicates a water drop. (**W**) indicates a waterdrop nearby as shown on the map.

Control descriptions: 'The feature' (eg the knoll) means it is shown on the map. 'A feature' (eg a knoll) is not marked on the map, but is evident on the ground.